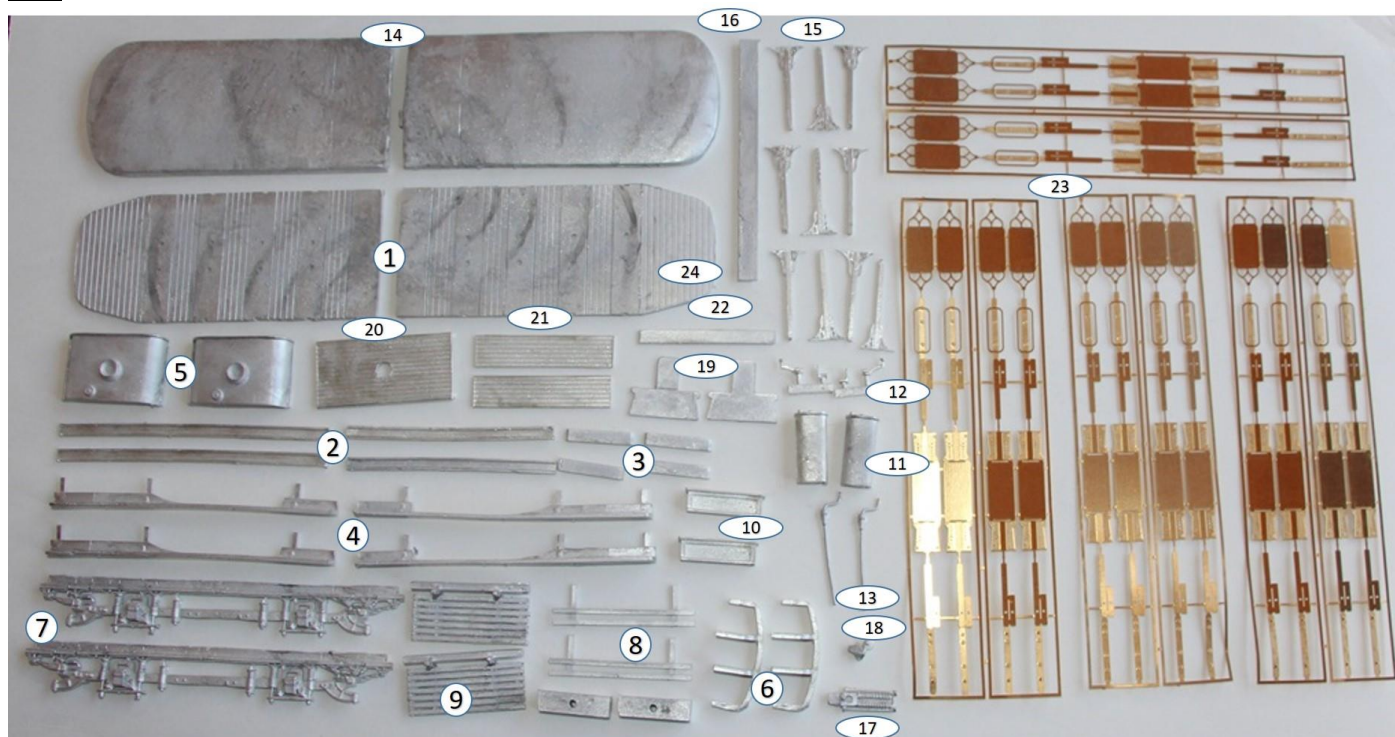


KW Trams

KW 126 Portsmouth Toastrack later

Parts



1. Tram floor	x2	14. Roof	x2
2. Floor sides	x4	15. Roof supports	x10
3. Floor side extensions	x4	16. Trolley plank	x1
4. Long step	x4	17. Dummy trolley spring	x1
5. Dash panel	x2	18. Dummy trolley wheel	x1
6. Bumper	x2	19. Middle seat sides	x2
7. Truck side	x2	20. Middle seat seat	x1
8. 2 bar life guard	x2	21. Middle seat backs	x2
9. Life tray	x2	22. Middle seat top	x1
10. Destination box	x2	23. Etched brass seats sets of 4	x4
11. Controller	x2	24. Brass rod	x2
12. Controller handle & key	x2		
13. Handbrake	x2		

Build Steps

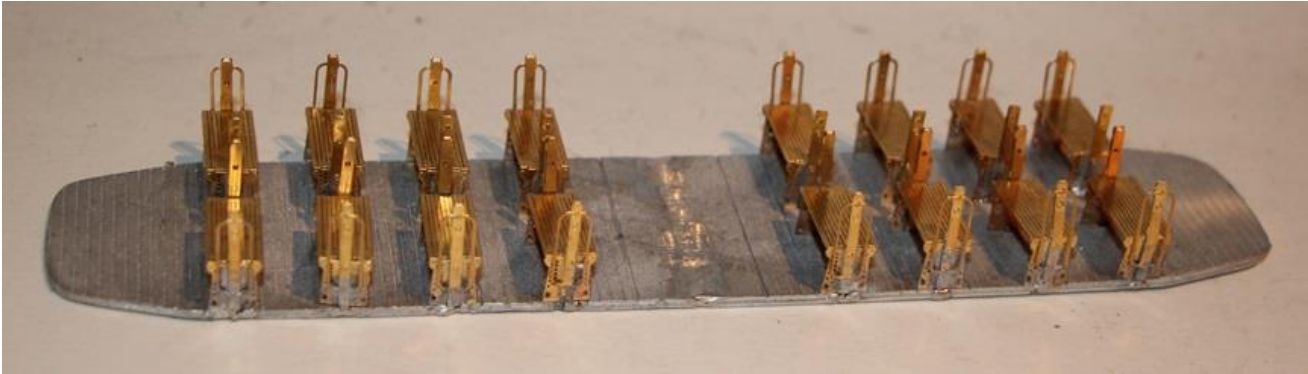
1. Fix the two halves of the floor together. Make sure that the central and side slots for the seats are clear and deep enough to take the tabs on the seats.



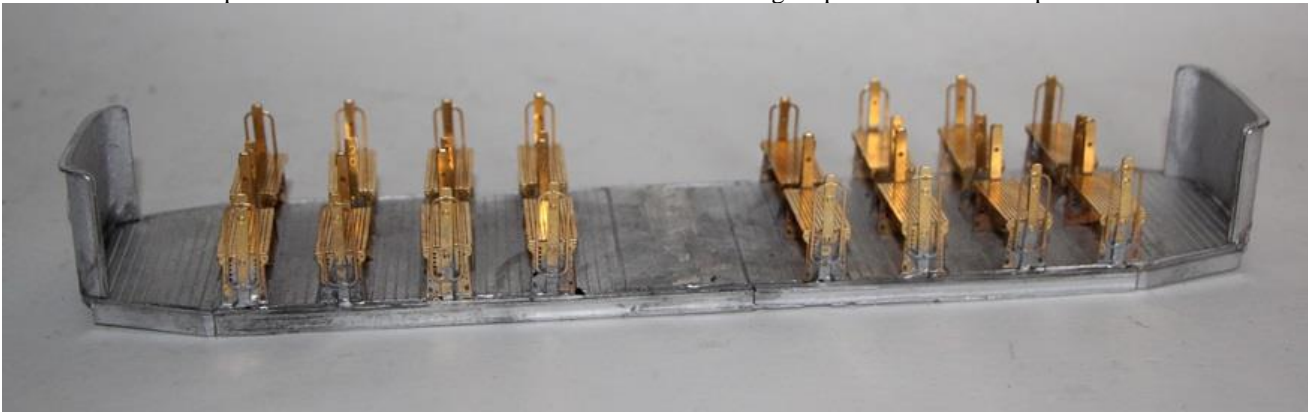
2. Fix the dashes centrally to the ends of the floor.



3. Fold up the seats and fix the sides together.
4. Fit the seats to the floor. The seat ends with the handrails go at the outer sides. Note – the lower halves of the outer seat sides need to be bent inwards at the bottom so that the tabs fit into the slots on the sides of the floor. The upper halves of the seat sides need to remain vertical.



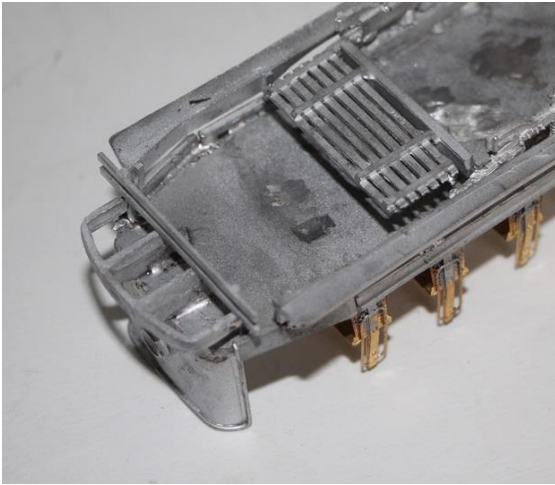
5. Join one short and one long floor side together, then fit centrally to the side of the floor, so that the top of the floor side is flush with the top of the floor. Fit the floor side extensions to the angled part of the floor. Repeat for the other side.



6. Shorten the posts on the steps by around 3mm and fix the steps to the floor sides with the posts against the bottom edge of the floor side.
7. Fit the truck sides centrally behind the steps with the axle boxes touching the backs of the steps. Check that the motor fits between the truck sides.



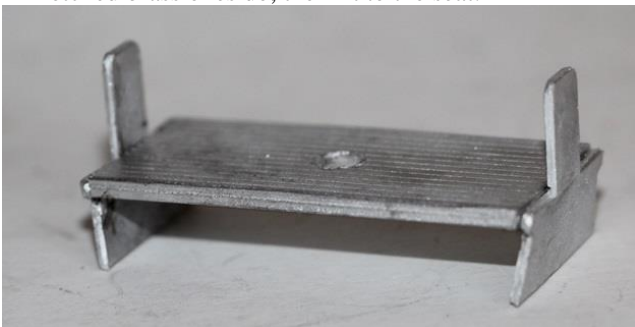
8. Fix bumpers under the ends of the floors with the curved section of the middle two bearers extending beyond the end of the floor.
9. Fit the lifetrays to the ends of the truck sides with the legs touching the underside of the floor.
10. Fit the lifeguards against the back edge of the bumper bearers.



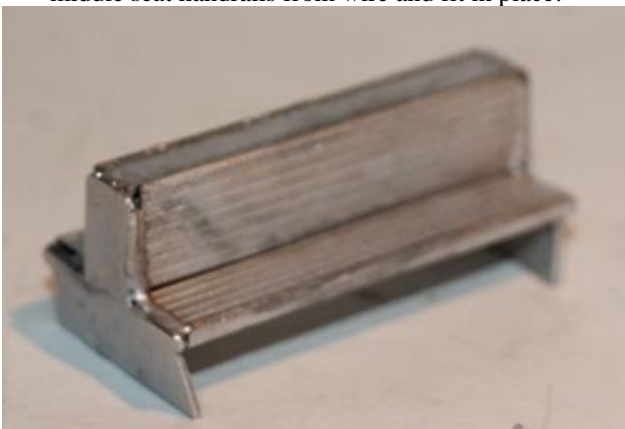
11. Fix the motor mounting blocks behind the ends of the lifetrays. Use the motorising unit to identify where they need to be fixed.



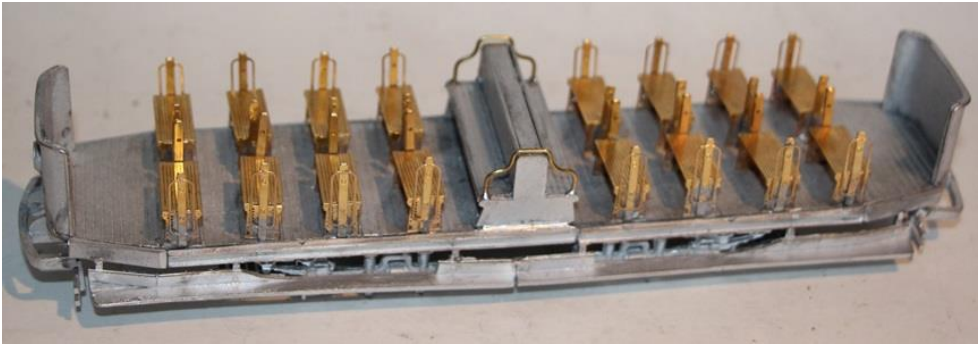
12. Very slowly and carefully bend the middle seat sides so that the lower section of the side slopes inwards in the same as the etched brass ones do, then fit to the seat.



13. Fit the seat backs each side with a gap for the seat top. The seat top then needs to be trimmed to fit in the gap. Make up the middle seat handrails from wire and fit in place.



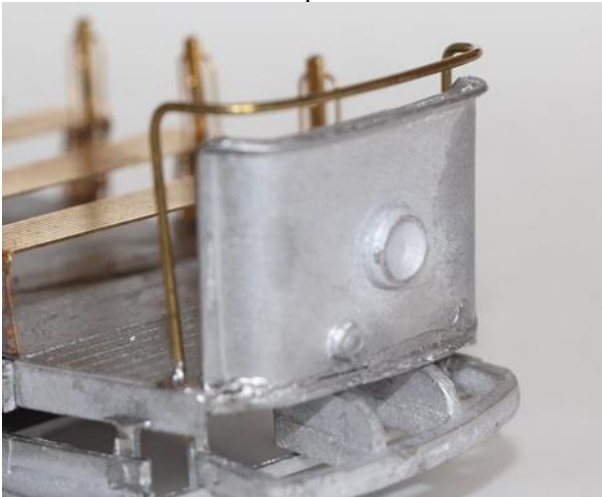
14. Fit the seat to the centre of the floor.



15. Fit the controller handles and one key to the controllers.



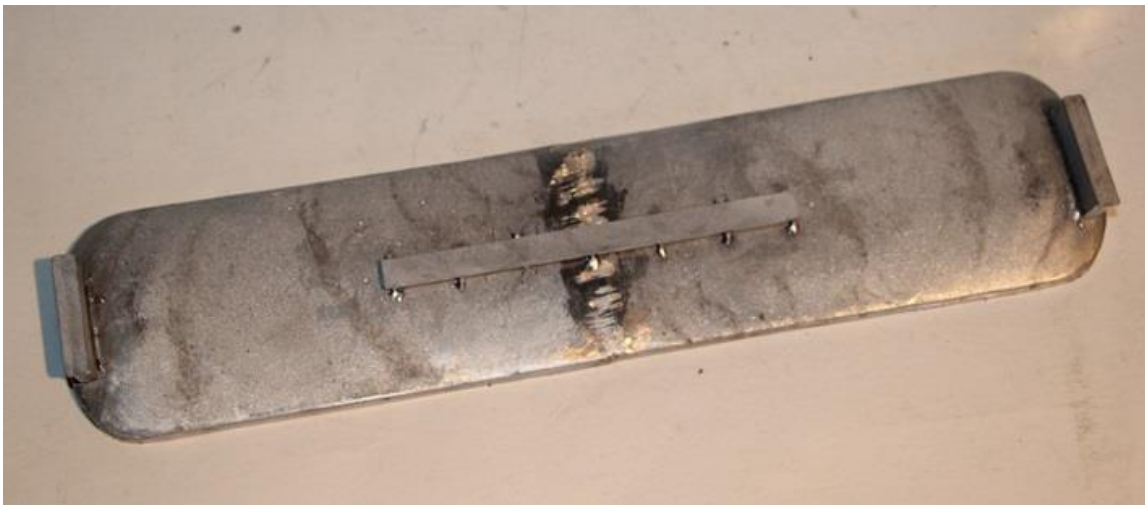
16. Bend a piece of wire so that it fits around the sides and top of the dash leaving a 3mm gap all the way round. Drill holes in the floor and fit the wire in place.



17. Fix the two halves of the roof together.



18. Fix the trolley plank centrally to the top of the roof. Fix the two destination boxes near the ends of the roof.



19. Make up a trolley pole from wire. Drill holes in the ends of the dummy spring and the dummy trolley wheel and fit the wire between them.
20. Fit the roof supports to the top of the 1st and 3rd etched brass seats from the end, and the middle seat. To strengthen these, I made up a “n” shape piece of brass that fitted at behind the etched brass seat sides, under the roof and down to the other side. I then drilled holes in these to take the etched brass seat backs.

